

# Introduction



*Hiroshi Tsuno, Senior Director*

The Lake Biwa Environmental Research Institute (LBERI) was established in 2005 as a testing and research institute for the environment of Lake Biwa and Shiga prefecture. Since then, it has been providing scientific knowledge and results to the prefectural government and residents of Shiga.

In recent years, Lake Biwa and its catchment area have seen improvements in its water quality thanks to various efforts, but the environmental issues facing the Lake and Shiga, such as the decline of native fish and shellfish, have become more complex and diverse. In addition, the effects of climate change are beginning to appear, including in the ecosystem.

It goes without saying that Lake Biwa is an important lake. What is happening to it and the forests, rivers, villages, and lakes that surround it? It is important to know the exact answer and what we should do to protect Lake Biwa and Shiga's environment.

Despite the accumulation of research and studies to date, the Lake and other natural features are complex, and there are still many unresolved questions. In order to unravel them, LBERI will continue to monitor Lake Biwa and the environment of Shiga to understand the changes they go through, and promote research based on a comprehensive perspective in cooperation with a variety of entities.

## History

2005

Lake Biwa Environmental Research Institute established.

Lake Biwa Research Institute and Shiga Prefectural Institute of Public Health and Environmental Science (Environmental Division) integrated

2013

Minister of Internal Affairs and Communications Award for Regional Development (research institutions award) received

2014

Shiga Forest Research Center (Research Division) transferred

Lake Biwa Environmental Research Promotion Organization established

2015

Operation of the experimental water quality research vessel Biwakaze begins

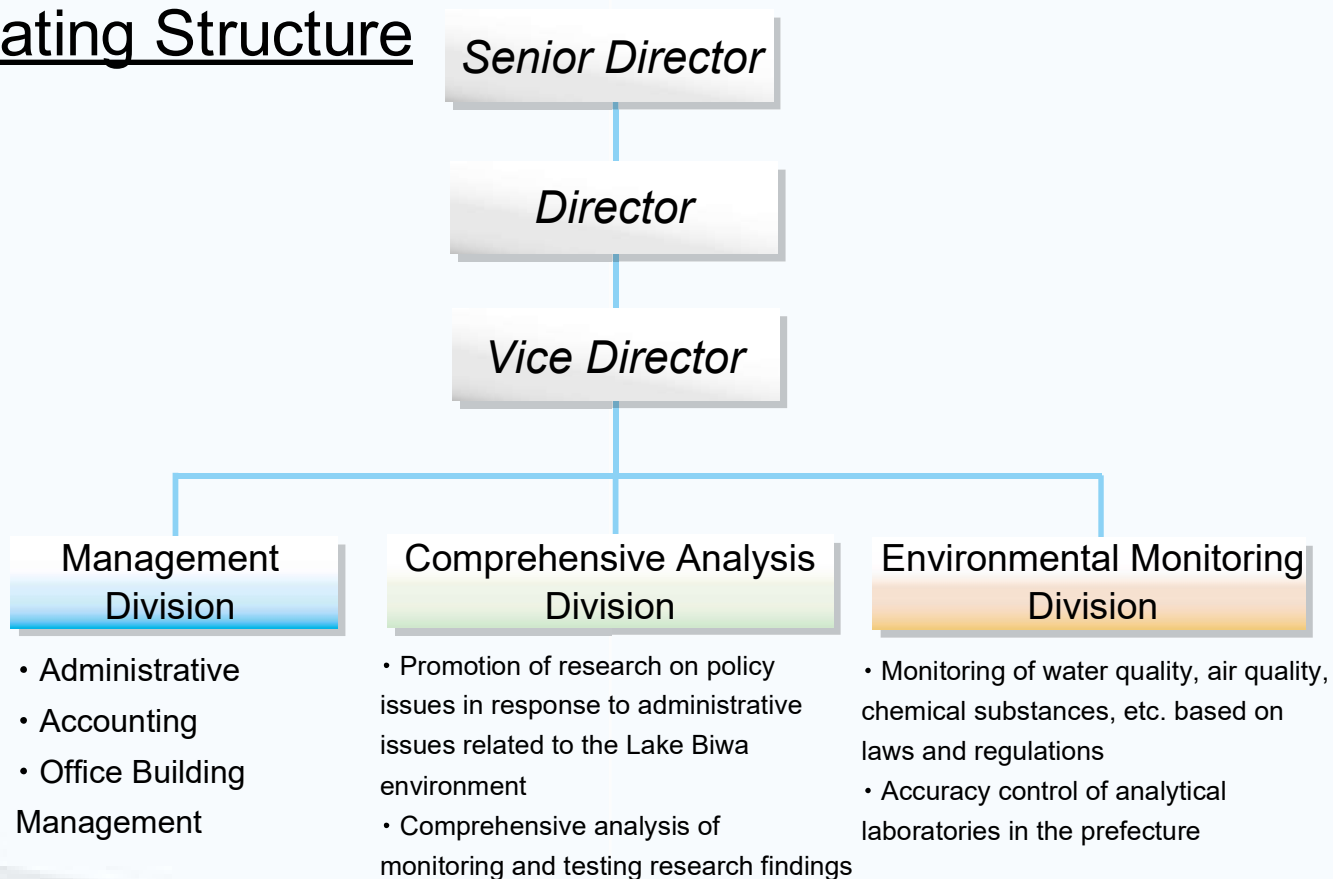
2017

Lake Biwa Branch of the National Institute for Environmental Studies (NIES) established

2020

Start of LBERI's sixth mid-term plan (2020-2022)

## Operating Structure



## Role

